



ACC HIGGINS™

PRODUCT GUIDE

CONTENTS

Solid Timber **COFFINS** 7

Kent	8
Blackwood	9
Ambassador	10
Sapele Davidson	11
Denman Cedar	12
Teakdale	13
Lawson	14
Dexter Jarrah	15

Timber Veneered **COFFINS** 17

Davidson	18
Whitehall	19
Montrose	20
Hampton	21
Brighton	22
Norwood White	23
Norwood	24
Rundle	25

Solid Timber **CASKETS** 27

Paramount Mahogany	28
Capital Mahogany	29
Bordeaux Cherry	30
Da Vinci Maple	31
Fairholme Oak	32
Frederick Poplar	33
Westfield Poplar	34
Pieta Poplar	35
Heavenly White Poplar	36
Tasmanian Blackwood Dome	37
Macalister	38

Precious Memories	39
Regal	40
Cromwell Cedar	41
Grecian Urn Blackwood	42
Grecian Urn Lacquered	43
Grecian Urn Deluxe	44
Grecian Urn Jarrah	45
Devon	46

Environmental **COFFINS AND CASKETS** 49

Natural Legacy	50
Enviro Casket	51
Enviro Coffin	52
Willow	53

Composite Board **COFFINS** 55

Themes of Life	56
Pearline	58
Golden Teak	60
Sovereign Redgum	61
White Dome	62
Montcalvary	63
Montrose	64
Waverley DRL	65
Two Tone	66
Swan	67
Drummond SRL	68
Country Oak SRL	69
Lambeth	70
Drummond Flat Lid	71
Braid	72

Metal **CASKETS** 75

Majestic Gold	76
El Dorado	77
Garrison	78
Cognac Jewel	79
White Rose	80
Essex Champagne	81

OTHER ACCESSORIES 83 & Ancillary Products

Child's Coffin	84
Child's Grecian Urn	85
Child's Natural Legacy	86
Bariatric Caskets & Coffins	87
Grave Markers	88
Crucifix Mounts	89
Cremation Urns	90

Helping you help families

As Australia's leading coffin and casket manufacturer, ACC Higgins is able to supply a large range of high quality coffins and caskets to Funeral Directors from all across Australia. We aim to continuously improve our products in order to deliver the highest quality and most reliable products in the Australian market.

What sets ACC Higgins apart from other coffin and casket manufacturers is our promise to be more than just another supplier to our customers, but rather to become a partner. We achieve this by working with our customers to understand and meet their needs, and to improve their businesses whilst enhancing the funeral experience.

Our goal is to help make the funeral experience better by improving the choice, emotional connection, quality and value of our products and services. ACC Higgins improves customer and family outcomes through tailored merchandising support, superior product value and outstanding customer responsiveness.

TAILORED MERCHANDISING ASSISTANCE

- ◆ Customised Training Program
- ◆ Assistance in Selection Room Design
- ◆ Sales Aids to help Arrangers Present Products to Families

SUPERIOR PRODUCT VALUE

- ◆ Innovative Design
- ◆ Comprehensive Quality Control
- ◆ Strong Focus on Reliability
- ◆ Best Structural Integrity
- ◆ Environmental Choices
- ◆ Personalised Coffins
- ◆ Extensive Range

OUTSTANDING CUSTOMER RESPONSIVENESS

- ◆ Extensive Bariatric Capabilities
- ◆ Special Orders Flexibility
- ◆ Efficient Delivery Procedures
- ◆ “Can Do” Attitude

SIX POINT PROTECTION PLAN

1. Thicker Bases on Coffins & Caskets
2. Water Based Glue
3. 45mm Staples
4. 8 Screws per Coffin Base
5. 6 Strategically Placed Timber Blocks
6. Bolting Handles

INNOVATIVE SERVICE TOOLS



DIAMOND
MERCHANDISING SYSTEM™



3Dreamit
DREAM PLAN DO.

EXCLUSIVE PRODUCTS



WORKING TOWARDS A SUSTAINABLE FOREST FUTURE

ACC Higgins' timbers are sourced from suppliers who identify environmental sustainability as a principle factor in any current or future operations in the forest products industry. Timbers are sourced principally from forests with international certification.





Solid Timber **COFFINS**

Our Solid Timber coffins are crafted from a selection of high grade Tasmanian Blackwood, African Sapele, Cedar, American Oak, Jarrah and plantation grown Radiata Pine.



- Solid American Oak
- Golden Oak, Gloss Finish
- Double Raised Lid
- Carved Corners
- Wide Fluted Mouldings

Pictured: Kent with silver thumbscrews and swing bar handles.

Note: Handles, thumbscrews and escutcheons are for illustration purposes only.





- Solid Tasmanian Blackwood
- Natural, Low Sheen Finish
- Single Raised Lid
- Carved Corners
- Wide Fluted Mouldings

Pictured: Blackwood with bronze thumbscrews and wood bar handles.
Note: Handles, thumbscrews and escutcheons are for illustration purposes only.





- Solid Cedar
- Walnut, Gloss Finish
- Sculpted Double Raised Lid
- Corner Pillars
- Wide Fluted Base Moulding

Pictured: Ambassador with silver lid clips and swing bar handles.
Note: Handles are for illustration purposes only.





- Solid African Sapele
- Natural, Low Sheen Finish
- Stylish Curved Lid
- Contemporary Design
- Top and Bottom Side Mouldings

Pictured: Sapele Davidson with brass lid clips and handles.
Note: Handles are for illustration purposes only.





- Solid Cedar
- Cedar Colour, Low Sheen Finish
- High Tiered Lid
- Three Side Panels
- Wide Fluted Base Moulding

Pictured: Denman Cedar with gold thumbscrews and wood bar handles.
Note: Handles, thumbscrews and escutcheons are for illustration purposes only.





- Solid Plantation Pine
- Rosewood or Walnut, Gloss Finish
- High Tiered Lid
- Three Side Panels
- Wide Fluted Base Moulding

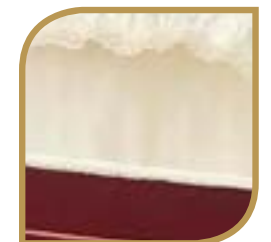
Pictured: Teakdale Rosewood with silver thumbscrews and swing bar handles.
Note: Handles, thumbscrews and escutcheons are for illustration purposes only.





- Solid Plantation Pine
- Rosewood or Walnut, Gloss Finish
- Single Raised Lid
- Grooved Sides
- Rounded Corners

Pictured: Lawson Rosewood with silver thumbscrews and wood bar handles.
Note: Handles thumbscrews and escutcheons are for illustration purposes only.





- Solid Jarrah
- Natural, Satin Finish
- Single Raised Lid
- Carved Corners
- Wide Fluted Mouldings

Pictured: Dexter Jarrah with bronze thumbscrews and wood bar handles.
Note: Handles, thumbscrews and escutcheons are for illustration purposes only.





Timber Veneered **COFFINS**

Our Timber Veneered coffins are constructed with timber veneer bonded to Medium Density Fibreboard (MDF). This allows us to produce the look of solid timber at a much lower price. We veneer coffins with Pine, African Sapele, and American Walnut.



- Pine Timber Veneered MDF Sides
- Rich Rosewood, Gloss Finish
- Solid Pine Stylish Curved Lid
- Wide Base Moulding

Pictured: Davidson with silver lid clips and wood bar handles.
Note: Handles are for illustration purposes only.





- Pine Timber Veneered MDF
- Jarrah, Gloss Finish
- Double Raised Lid
- Buttoned & Carved Corners

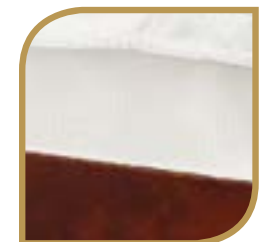
Pictured: Whitehall with silver thumbscrews and swing bar handles.
Note: Handles, thumbscrews and escutcheons are for illustration purposes only.





- Pine Timber Veneered MDF Sides
- Rich Walnut, Gloss Finish
- Solid Pine High Tiered Lid
- Wide Fluted Base Moulding

Pictured: Montrose with silver thumbscrews and swing bar handles.
Note: Handles, thumbscrews and escutcheons are for illustration purposes only.





- American Walnut Timber Veneered MDF
- Satin Finish
- Flat Lid
- Simple Elegance in a Modern Design

Pictured: Hampton with antique gold metal thumbscrews and brass handles.
Note: Handles, thumbscrews and escutcheons are for illustration purposes only.





- African Sapele Timber Veneered MDF
- Satin Finish
- Flat Lid
- Simple Elegance in a Modern Design

Pictured: Brighton with silver metal thumbscrews and handles.

Note: Handles, thumbscrews and escutcheons are for illustration purposes only.



Norwood White | TIMBER VENEERED COFFINS



- Pine Timber Veneered MDF
- Lacquered White, Gloss Finish
- Single Raised Lid
- Grooved Sides

Pictured: Norwood White with silver thumbscrews and wood bar handles.
Note: Handles, thumbscrews and escutcheons are for illustration purposes only.





- Pine Timber Veneered MDF
- Rosewood, Gloss Finish
- Single Raised Lid
- Grooved Sides

Pictured: Norwood Rosewood with silver thumbscrews and wood bar handles.
Note: Handles, thumbscrews and escutcheons are for illustration purposes only.





- Pine Timber Veneered MDF
- Rosewood, Gloss Finish
- Scalloped Lid
- Grooved Sides

Pictured: Rundle Rosewood with silver thumbscrews and handles.

Note: Handles, thumbscrews and escutcheons are for illustration purposes only.





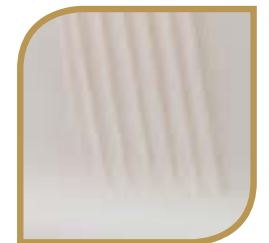


Solid Timber **CASKETS**

Our Solid Timber caskets are crafted from a selection of high grade Tasmanian Blackwood, Cedar, Jarrah, American Oak, and plantation grown Radiata Pine. The Legacy Tribute range is made in North America from Mahogany, Cherry, Maple, Oak, and Poplar.



- Solid Mahogany
- Rich Titian, Hand Polished High Gloss Finish
- Inlaid Full Top
- Solid Mahogany Inlaid Foot Panel
- Rounded Timber Handles
- Fully Lined in Ivory Sierra Suede





- Solid Mahogany
- Rich Titian, Hand Polished High Gloss Finish
- Full Top*
- Hand Tufted Cap Panel
- Rounded Timber Handles
- Beige Velvet Interior

Made in North America
*Also available in Cut Top



Bordeaux Cherry | SOLID TIMBER CASKETS



- Solid Cherry
- Garnet, Hand Polished High Gloss Finish
- Cut Top
- Elegant Gold Mylar Beading
- Rounded Timber Handles
- Ivory Basket Weave Interior

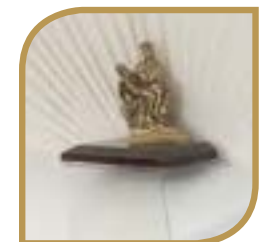
Made in North America





- Solid Maple
- Antique Cherry, High Gloss Finish
- Cut Top
- Family Keepsake Statue
- Timber Handles on all Sides
- Beige Velvet Interior

Made in North America





- Solid American Oak
- Fawn, Shaded, High Gloss Finish
- Cut Top
- Octagonal End Design
- Timber Bar Handles
- Ivory Basket Weave Interior

Made in North America





- Solid Poplar
- Nugget, Two Tone High Gloss Finish
- Cut Top
- Cap Panel allows for Display of Photos
- Timber Handles on all Sides
- Ivory Basket Weave Interior

Made in North America





- Solid Poplar
- American Cherry, High Gloss Finish
- Cut Top
- EuroSize, Slightly Smaller European Dimensions
- Timber Handles on all Sides
- Champagne Linen Interior

Made in North America





- Solid Poplar
- Antique Cherry, High Gloss Finish
- Cut Top
- Family Keepsake Statue &/or Last Supper Cap Panel
- Antique Gold Tone Bar Handles
- Tan Crepe Interior

Made in North America



Heavenly White Poplar | SOLID TIMBER CASKETS



- Solid Poplar
- White, Gloss Finish
- Cut Top
- Mist Copper Tone Swing Bar Hardware
- Timber Handles on all Sides
- White Crepe Interior

Made in North America



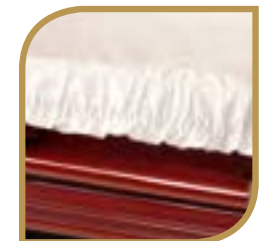


- Solid Tasmanian Blackwood
- Natural, Low Sheen Finish
- Domed Cut Top
- Timber Handles on all Sides
- Pleated Deluxe White Satin Drapery





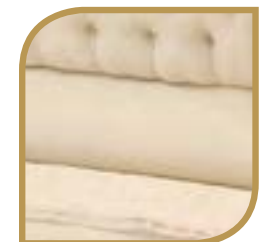
- Solid Cedar
- Red Cedar, Gloss Finish
- Domed Cut Top
- Timber Handles on all Sides
- Luxury Cream Crepe Drapery





- Solid Plantation Pine
- Rosewood or Walnut, Gloss Finish
- Domed Cut Top
- Corner Pillars
- Full Length Timber Handles
- Fully Lined with Velvet Drapery

Pictured: Precious Memories Rosewood





- Solid Cedar
- Jarrah or Walnut, Gloss Finish
- Cut Top
- Corner Pillars
- Deluxe Cream Satin Drapery

Pictured: Regal Walnut with silver swing bar handles.





- Solid Cedar
- Cedar, Satin Finish
- Full Top
- Octagonal End Design
- Timber Swing Bar Handles
- Deluxe Cream Satin Drapery





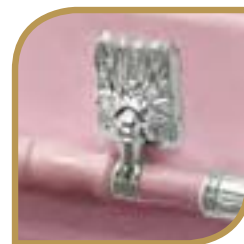
- Solid Tasmanian Blackwood
- Natural, Low Sheen Finish
- Full Top
- Octagonal End Design
- Timber Swing Bar Handles
- Deluxe Cream Satin Drapery





- Solid Plantation Pine
- Lacquered White, Pearl or Pink, Gloss Finish
- Full Top
- Octagonal End Design
- Timber Swing Bar Handles
- Deluxe Cream Satin Drapery

Pictured: Grecian Urn White



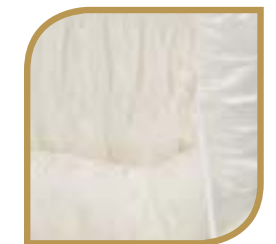
Pink



Pearl



White





- Solid Plantation Pine
- Rosewood or Walnut, Gloss Finish
- Full Top
- Octagonal End Design
- Timber Swing Bar Handles
- Deluxe Cream or Ivory Satin Drapery

Pictured: Grecian Urn Deluxe Rosewood



Ivory



Cream





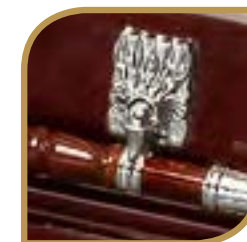
- Solid Jarrah
- Satin Finish
- Full Top
- Octagonal End Design
- Timber Swing Bar Handles
- Deluxe Cream Satin Drapery





- Solid Plantation Pine
- Walnut or Rosewood, Gloss Finish
- Full Top
- Carved Sides
- Timber Swing Bar Handles
- Quality White Satin Drapery

Pictured: Devon Walnut







Environmental **COFFINS & CASKETS**

Our environmental range utilises renewable resources to limit environmental impact. These coffins and caskets provide a simple design for those seeking a more natural alternative.



natural legacy

BY HAINSWORTH

- Pure New Wool Outer Layer, Available in Natural or Limestone Grey
- Strong Recycled Cardboard Frame Reinforced with a MDF Base for Rigidity and Stability
- Generously Lined with Cotton and Complete with Woollen Mattress and Cotton Pillow
- The Comforting Alternative Available in 172cm (5'8") & 188cm (6'2") Sizes
- Cremated Remains Box Also Available





- Solid Plantation Grown Radiata Pine
- Raw Finish
- Six Rope Handles*
- Unbleached Calico Lining

* Wooden Handles Available Upon Request





- Solid Plantation Grown Radiata Pine
- Raw Finish
- Six Rope Handles*
- Unbleached Calico Lining

* Wooden Handles Available Upon Request





- Curved End Wicker Coffin
- Hand Woven
- Rope Handles







Composite Board **COFFINS**

Our Composite Board coffins are constructed with MDF or particleboard and either have a paper veneer, lacquered, or stained finish.



- PVC-Free Vinyl Wrapped MDF
- Choose from a Range of Designs
- Create Custom Designs
- Cremator Friendly

Pictured: Flowers



Roses



Golfing



Jetty Fishing



Sunset



- Painted MDF Construction
- Metallic Colours: Mint, Blush, Bronze, Ivory, and Black
- Single Raised Lid
- Routed Lid and Sides

Pictured: Pearline Blush with silver lid clips and metal handles.
Note: Handles are for illustration purposes only.



Ivory



Mint



Black



Bronze



- Solid Timber & MDF Single Raised Lid
- Teak, Gloss Finish
- Paper Veneered MDF Sides
- Routed Lid and Sides

Pictured: Golden Teak with gold lid clips and swing bar handles.
Note: Handles are for illustration purposes only.





- Paper Veneered MDF
- Burlled Redgum, Gloss Finish
- Double Raised Lid
- Grooved Sides

Pictured: Sovereign Redgum with gold thumbscrews and wood bar handles.
Note: Handles, thumbscrews and escutcheons are for illustration purposes only.





- Painted MDF Construction
- Lacquered White, Gloss Finish
- Single Raised Lid
- Wide Base Moulding

Pictured: White Dome with gold lid clips and swing bar handles.
Note: Handles are for illustration purposes only.





- Paper Veneered MDF
- Rich Rosewood, Gloss Finish
- Cross Engraved High Tiered Lid
- Wide Fluted Base Moulding

Pictured: Montcalvary with gold thumbscrews and handles.

Note: Handles, thumbscrews and escutcheons are for illustration purposes only.





- Paper Veneered MDF
- Rich Rosewood, Gloss Finish
- High Tiered Lid
- Wide Fluted Base Moulding

Pictured: Montrose with gold thumbscrews and handles.

Note: Handles, thumbscrews and escutcheons are for illustration purposes only.





- Paper Veneered MDF
- Sapele, Walnut or Teak, Gloss Finish
- Double Raised Lid
- Fluted Base Mould

Pictured: Waverley Sapele with silver thumbscrews and handles.
Note: Handles, thumbscrews and escutcheons are for illustration purposes only.





- Paper Veneered MDF
- Rosewood Shaded Teak, Gloss Finish
- Single Raised Lid
- Fluted Base Mould

Pictured: Two Tone with gold thumbscrews and handles.
Note: Handles, thumbscrews and escutcheons are for illustration purposes only.





- Paper Veneered MDF
- Sapele or Rosewood, Gloss Finish
- Single Raised Lid
- Wide Fluted Base Mould

Pictured: Swan Sapele with silver thumbscrews and handles.

Note: Handles, thumbscrews and escutcheons are for illustration purposes only.





- Paper Veneered MDF
- Sapele, Rosewood, Walnut or Oak, Gloss Finish
- Single Raised Lid
- Simple Base Mould

Pictured: Drummond SRL Walnut with silver thumbscrews and handles.
Note: Handles, thumbscrews and escutcheons are for illustration purposes only.





- Paper Veneered Particleboard Sides
- Oak, Matt Finish
- Paper Veneered MDF & Particleboard Single Raised Lid

Pictured: Country Oak with silver thumbscrews and handles.
Note: Handles, thumbscrews and escutcheons are for illustration purposes only.





- Paper Veneered MDF Lid & Particleboard Sides
- Printed Maple, Matt Finish
- Rebated Lid

Pictured: Lambeth with brown handles.
Note: Handles are for illustration purposes only.





- Paper Veneered MDF
- Sapele, Rosewood*, Walnut or Teak, Gloss Finish

*Rosewood: Wide Fluted Lid & Base Moulding

Pictured: Drummond Flat Lid Teak with silver thumbscrews and handles.

Note: Handles, thumbscrews and escutcheons are for illustration purposes only.





- Paper Veneered Particleboard
- Maple, Matt Finish

Pictured: Braid with silver thumbscrews and handles.

Note: Handles, thumbscrews and escutcheons are for illustration purposes only.



A series of horizontal dotted lines for taking notes.





Metal **CASKETS**

Our Legacy Tribute metal caskets are made in North America from 48 oz Solid Bronze, 18 Gauge Steel or 20 Gauge Steel.



- 48 oz Solid Bronze
- Majestic Gold Brushed Finish
- 14 Carat Gold Plated Hardware
- Hand Tufted Pillow and Cap Panel
- Pearl Velvet Interior

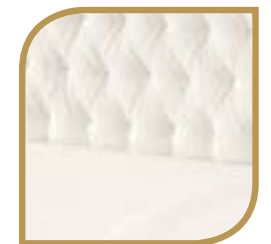
Made in North America





- 48 oz Solid Bronze
- Classic Midnight, Brushed Finish
- 14 Carat Gold Plated Hardware
- Pearl Velvet Interior with Tufted Pillow and Cap Panel

Made in North America





- 18 Gauge Steel
- Rich Cashmere Grey Finish
- Cap Panel allows for Display of Photos
- Ivory Basket Weave Interior

Made in North America





- 18 Gauge Steel
- Cognac, Brushed Finish
- Optional Last Supper Cap Panel
- Shirred Beige Velvet Interior

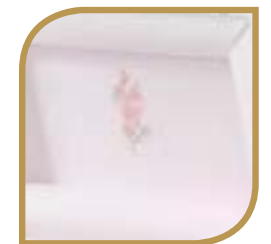
Made in North America





- 18 Gauge Steel
- White with Rose Shaded Finish
- Embroidered Rose Cap Panel
- Shirred Light Pink Velvet Interior

Made in North America





- 20 Gauge Steel
- Champagne Finish
- Embroidered Cap Panel
- Shirred Tan Crepe Interior

Made in North America







OTHER ACCESSORIES and Ancillary Products

Our capabilities include child and bariatric caskets and coffins, and our accessories range comprises of grave markers, crucifix mounts, and cremation urns.



- White, Pink or Blue Finish
- Available in Six Sizes:
 - 41cm (1'6")
 - 61cm (2'0")
 - 76cm (2'6")
 - 91cm (3'0")
 - 122cm (4'0")
 - 152cm (5'0")





- Solid Plantation Pine, Full Top
- Lacquered White Finish
- Octagonal End Design
- Fully Lined with Luxury Satin Drapery
- Available in Four Sizes:
61cm (2'0"), 91cm (3'0"), 122cm (4'0") and 152cm (5'0")





natural legacy

BY HAINSWORTH

- Pure New Wool Outer Layer
- Generously Padded Mattress and Beautiful Soft Wool Blanket
- Exterior Finished with Simple Blanket Stitch Detail, Jute Handles and Wooden Toggle Fastenings
- Available in Three Sizes: 45cm (18"), 60cm (24") and 76cm (30")
- 25cm (10") Cremated Remains Box also Available





- Our skilled craftsmen are capable of making a number of caskets and coffins in Bariatric sizes
- For all your Bariatric needs please call us to discuss your requirements

- White Lacquered MDF



White Cross

- 1200mm high



White Russian Cross

- 1500mm high



Serbian Cross

- 1310mm high



Chinese Cross

- 1200mm high



With Base

- Freestanding Mount with Base
- Available in Three Sizes to Suit 100mm (4"), 177mm (7") and 254mm (10") Crucifixes
- Rosewood, Walnut, Teak or White



Without Base

- Designed to Fit on a Flat Surface, or Mounted on a Wall
- Available in Three Sizes to Suit 100mm (4"), 177mm (7") and 254mm (10") Crucifixes
- Rosewood, Walnut, Teak or White



- Selection of vertical and horizontal urns in Cedar, Oak, Pine, and Blackwood



natural legacy

BY HAINSWORTH

Natural Legacy is the beautiful and comforting alternative to a traditional coffin or casket. Gentle on the eye and soft to the touch, Natural Legacy coffins and cremated remains caskets are loved by families for the less severe and more personalised goodbye that they allow.

Made using wool, Natural Legacy products are hand constructed on the same premises that has produced the outer woollen cloth for over 230 years. The woollen outer layer is carefully hand fitted around a strong recycled cardboard frame, which is reinforced with an MDF base board for rigidity and stability.

It is then carefully lined with a soft woollen wadding for a mattress base and finished with a beautiful blanket stitch detail, jute handles and simple wooden toggle fastenings.



Natural Legacy coffins and cremated remains caskets are completed with a delicately stitched personalised nameplate that is neatly attached to the coffin using two wooden toggles. A smaller more personal plate can be supplied for the head of the coffin which many families find consoling to retain as a keepsake following the funeral.



ACC HIGGINS™

acchiggins.com.au

VIC, NSW & TAS

2 Braid Street
West Footscray VIC 3012
T: 03 9283 7555
F: 03 9689 3654
E: simonb@acchiggins.com.au

WA

417 Victoria Road
Malaga WA 6090
T: 08 9209 1833
F: 08 9209 1844
E: wasales@acchiggins.com.au

QLD

10-12 Union Circuit
Yatala QLD 4207
T: 07 3382 0776
F: 07 3382 7787
E: gregs@acchiggins.com.au

SA & NT

7 Wirriga Street
Regency Park SA 5010
T: 08 8345 5873
F: 08 8345 5991
E: adamk@acchiggins.com.au

1300 588 480